

HIMEJI MAP for MUSLIMS

ムスリムおもてなしマップ in 姫路
Ver 3, Valid from Mar. 2021

姫路



MAP 5

Souvenir

8 Bansankan / 播産館



9:00-19:00
Closed on 12/29~1/3
123, Minamiekimaecho, Himeji-shi, Hyogo, 670-0962

9 Himeji Castle Souvenir Shop / 姫路城売店



9:00-17:00
Closed on 12/29, 12/30
68, Honmachi, Himeji-shi, Hyogo, 670-0012

Sightseeing

A Himeji Castle 姫路城



Japan's best preserved feudal castle

Himeji Castle is a brilliantly white castle located in Himeji, Japan. In 1993, Himeji Castle was named one of the first UNESCO World Heritage Sites in Japan. The castle is also a National Treasure of Japan.

B Kokoen 好古園



Japanese style garden next to the castle

Kokoen is a Japanese garden located next to Himeji Castle. It is made up of nine separate walled gardens designed in various styles reflective of Edo-period architecture. The gardens were opened in 1992 to commemorate the centenary of Himeji City.

C Shoshazan Engyoji Temple 書寫山圓教寺



Temple mountain featured "The Last Samurai"

Mount Shosha is the site of Engyoji, an atmospheric temple complex with a history of over 1000 years. Due to the beautiful scenery and absence of modern infrastructure on its temple grounds, Mount Shosha is frequently used as a filming location for historical movies such as the Hollywood movie "The Last Samurai".

Rental Bicycle Service 姫ちやり



Rental Bicycle Service

The bicycles can be rented and returned at any of the Himechary cycle stations (Each station is written on the back).

Information

i Himeji Tourist Information



姫路市観光案内所
Get Himeji Travel Guide Map for Free!
9:00-19:00 Closed on 12/29, 12/30

Himenomichi



ひめのみち
Himeji Tourist Information Site

Muslim-friendly Restaurant

Icon Guides Prayer space Free Wi-Fi available Credit card available

! Please ask the staff in advance if you would like to order Muslim-friendly menu

1 Omotenashi Dining Fukutei / おもてなしダイニング福亭 Japanese



Lunch 11:30-14:30 (L.O.14:00)
Dinner 17:00-21:00 (L.O.21:00)
Closed on 12/30~1/2
Avg. Price Lunch: ¥1,500~ Dinner: ¥1,500~
75, Kamei-machi, Himeji-shi, Hyogo, 670-0925



2 Tempura and Sashimi KAMI-FUKU / 天ぷら海鮮 神福 Japanese



Lunch 11:00-15:00 (L.O.14:30)
Dinner 17:00-23:00 (L.O.22:00)
Irregular
Avg. Price Lunch: ~¥999 Dinner: ¥2,000-2,999
5F Qwell Himeji, 1-4 Nishieki-mae-cho, Himeji-shi, Hyogo 670-0193



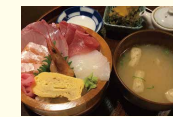
3 Ekisoba Otemae / えきそば 大手前店 Japanese



10:00-18:00
Closed on 1/1
Avg. Price Lunch: ~¥1,000 Dinner: ~¥1,000
1F, 68, Shiroganemachi, Himeji-shi, Hyogo, 670-0902



4 Izakaya Gonta / 居酒屋 こん太 Japanese



Lunch 12:00-15:00
Dinner 15:00-24:00 (L.O.23:30)
Closed on Monday
Avg. Price Lunch: 1,000~4,999 Dinner: 1,500~4,999
193, Shiomachi, Himeji-shi, Hyogo, 670-0904



5 Chikuzen / 竹善 Japanese



Lunch 11:00-14:00 (L.O.13:30)
Dinner 17:30-22:00 (L.O.20:00)
Closed on Tuesday
Avg. Price Lunch: ¥1,500~1,999 Dinner: 10,000~14,999
52, Sanzaemombori Higashinomachi, Himeji-shi, Hyogo, 670-0949



6 Senhimechaya / 千姫茶屋 Japanese



Lunch 11:00-14:30 (L.O.14:00)
Closed on 12/31
Avg. Price Lunch: ¥1,300
1F Egret-himeji, 68-290, Honmachi, Himeji-shi, Hyogo, 670-0012



7 Restaurant in a Bookstore KARIN / 本屋の中のレストラン 香凛 Japanese



11:30-18:00 (L.O.17:30)
Closed on Monday, Tuesday, Friday, Saturday, Sunday
Avg. Price ¥1,000
68, Honmachi, Himeji-shi, Hyogo, 670-0012



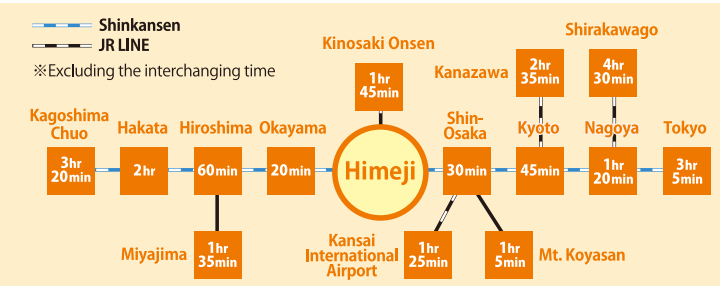
HIMEJI AREA



Where is Himeji? 📍



Access to Himeji 🚆



Model Course 🚶

course 1

- Himeji Tourist Information** Himeji tourist map you want to get first.
- Tempura and Sashimi KAMI-FUKU (Tendon)** Eat Muslim friendly Tendon at Kamifuku.
- Himeji Castle by bicycle** Rent a bicycle at Himechari and look around Himeji Castle.

course 2

- Himeji Castle Souvenir Shop** Himeji Castle souvenir shop provides muslim friendly snack for souvenir.
- Koko-en** Experience Japanese tea ceremony at Koko-en.
- Omotenashi Dining Fukutei (Anago)** Eat Anago-Don (Bowl of conger eel) at Fukutei.

HIMEJI
Promotion Movie



Muslim Friendly
HIMEJI



HIMEJI sta. AREA